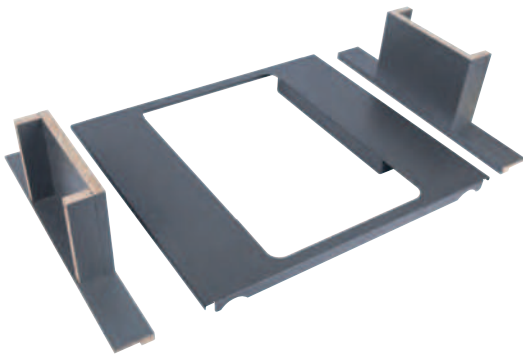


Ninka one2seven flexible hanging frames, for Blum Legrabox



- > Designed to fit Blum Legrabox drawers
- > Suitable for 450, 500 or 600 mm cabinet widths with 18/19 mm board thickness
- > Robust steel and chipboard construction
- > Order qty: 1 pc

For cabinet width	Cat. No.
Dark grey	
450 mm	503.68.464
500 mm	503.68.465
600 mm (for 12, 17, 26 or 32 litre bins)	503.68.467
600 mm (for 25, 35 or 42 litre bins)	503.68.477

YOU ALSO NEED:

 **DRAWER SYSTEM**
Supplied by customer

 **INDIVIDUAL BINS**
Page 1.236

COVER PLATE OR BIN LIDS
Page 1.237

HÄFELE MATRIX BOX DRAWER SIDE SYSTEMS

Matrix Box is the innovative drawer range from Häfele, available pre-assembled and with full extension soft and self closing synchronised runners.

See the full Häfele Matrix Box drawer systems range online at hafele.co.uk.



TCH DESIGN 2020. © Häfele U.K. Ltd 2020. Dimensional data not binding. We reserve the right to alter specifications without notice.