

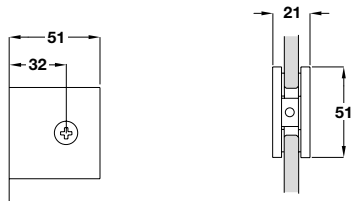
SHOWER DOOR HINGES

This range of shower door hinges is suitable for toughened glass doors 8 mm thick.

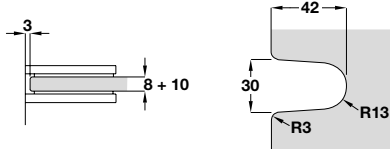
Wall to glass connector 90°



- > Suitable for toughened glass fixed side panels 8-10 mm thick, max. 915 x 2000 mm wide
- > Brass
- > Order qty: 1 pc (2 pcs required per door)



Glass machining



981.78.270 HAS REPLACED NUMBER 981.38.152

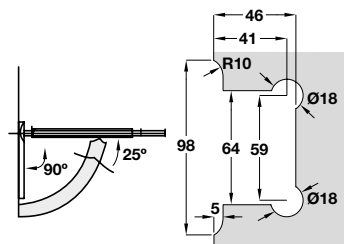
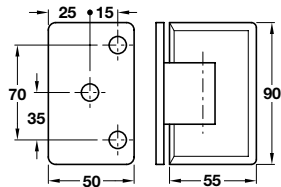
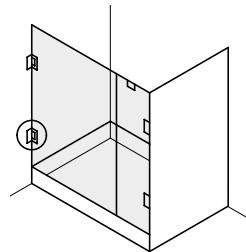


Finish	Cat. No.
Polished chrome-plated	981.78.270

Wall to glass hinge 90° with plate



- > Suitable for toughened glass doors 8-12 mm thick and 800 mm wide
- > Panel weight must not exceed 36 kg per pair of hinges
- > Door closes automatically from 25° from closing point
- > Brass
- > Order qty: 1 pc (2 pcs required per door)



981.78.268 HAS REPLACED NUMBER 981.02.222



Finish	Cat. No.
Polished chrome-plated	981.78.268

TCH AH 2019, © Häfele U.K. Ltd 2019. Dimensional data not binding. We reserve the right to alter specifications without notice.