

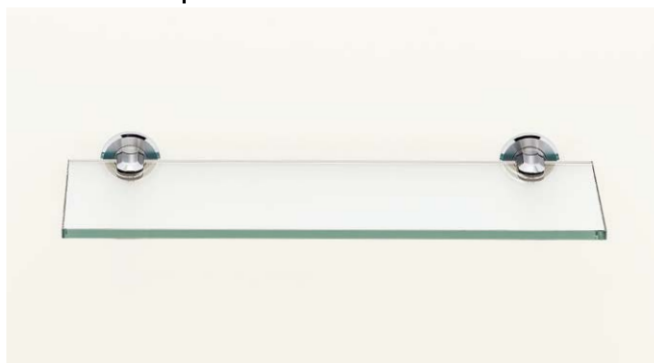
Zwei L GLASS SHELF CLAMP



ZL-2202



Installation Example



Features

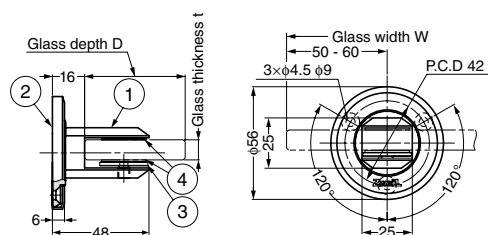
- Made of highly corrosion resistant SUS316
- Ultrapremium Zwei L finish. Zwei L finish: Using top class polishing technology, these products combine the elegance of Satin with the deep glow of a Mirror.
- Designed so that installation screw is not visible after installation

Remarks

- Glass thickness : 8 mm or 10 mm.
- Sold by piece.

Parts Included

- Allen key 2.5
- Countersunk head wood screw 4.1×32
- Plug



No.	Part Name	Material	Finish/Colour
①	Clamp	Stainless Steel (SUS316)	Zwei L Finish
②	Base Plate	Stainless Steel (SUS316)	Zwei L Finish
③	Bumper Plate	Stainless Steel (SUS316)	Zwei L Finish
④	Bumper	Rubber	Black

Item Code	Item Name	Glass Size / 2 pcs			Weight	Box
		t	D	W		
120-031-003	ZL-2202	8 or 10	Max. 160	Max. 480	480 g	2 pcs

Zwei L GLASS SHELF CLAMP



ZL-2203



Installation Example



Features

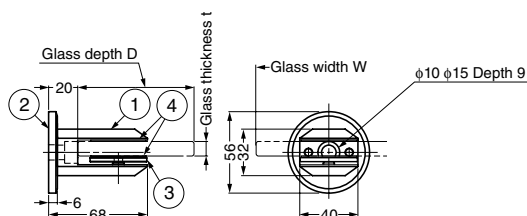
- Made of highly corrosion resistant SUS316
- Ultrapremium Zwei L finish. Zwei L finish: Using top class polishing technology, these products combine the elegance of Satin with the deep glow of a Mirror.
- Designed so that installation screw is not visible after installation

Remarks

- Glass thickness : 8 mm or 10 mm.
- Sold by piece.

Parts Included

- Allen key 6
- Countersunk head wood screw M8×60
- Plug



No.	Part Name	Material	Finish/Colour
①	Clamp	Stainless Steel (SUS316)	Zwei L Finish
②	Base Plate	Stainless Steel (SUS316)	Zwei L Finish
③	Bumper Plate	Stainless Steel (SUS316)	Zwei L Finish
④	Bumper	Rubber	Black

Item Code	Item Name	Glass Size / 2 pcs			Weight	Box
		t	D	W		
120-031-004	ZL-2203	8 or 10	Max. 240	Max. 640	495 g	1 pc