

Zwei L STAINLESS STEEL KNOB



ZL-1905

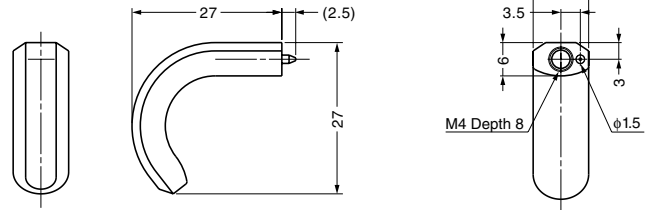
HANDLES,
PULLS & KNOBS

Features

- Made of highly corrosion resistant SUS316
- Ultrapremium Zwei L finish. Zwei L finish: Using top class polishing technology, these products combine the elegance of Satin with the deep glow of a Mirror.
- When combined with ZL-2302 (sold separately), can be used on glass.

Parts Included

Truss head screw M4x25 (SUS)



Item Code	Item Name	Material	Finish	Weight	Box
100-011-014	ZL-1905	Stainless Steel (SUS316)	Zwei L Finish	15 g	8 pcs

Zwei L KNOB BASE



ZL-2302



Knob is sold separately.

Plate + Screw Set for ZL-1904 and ZL-1905 Knobs (φ16)

Item Code	Item Name
100-010-976	ZL-2302-1916

No.	Part Name	Material	Finish/Colour	Box
①	Base Plate φ16	Stainless Steel (SUS316)	Zwei L Finish	1 pc
③	Gasket φ14	Elastomer (TPE)	Plain	2 pcs
⑤	Screw M4x16	Stainless Steel	Partially Zwei L Finish	1 pc

Features

- Zwei L series glass bracket for Zwei L knobs ZL-1901, ZL-1902, ZL-1903, ZL-1904, ZL-1905.
- Made of highly corrosion resistant SUS316
- Ultrapremium Zwei L finish. Zwei L finish: Using top class polishing technology, these products combine the elegance of Satin with the deep glow of a Mirror.
- Compatible glass thickness: 4-6mm

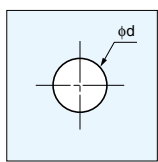
Plate + Screw Set for ZL-1901 and ZL-1903 Knobs (φ25)

Item Code	Item Name
100-010-977	ZL-2302-1925

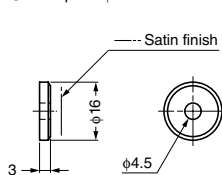
No.	Part Name	Material	Finish/Colour	Box
②	Base Plate φ25	Stainless Steel(SUS316)	Zwei L Finish	1 pc
③	Gasket φ14	Elastomer(TPE)	Plain	1 pc
④	Gasket φ20	Elastomer(TPE)	Plain	1 pc
⑤	Screw M4x16	Stainless Steel	Partially Zwei L Finish	1 pc

*2 sets are necessary in use for ZL-1903.

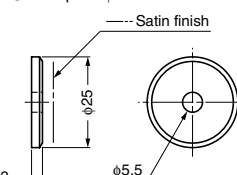
Cut Out Dimensions

Glass thickness 4, 5 : d=5
Glass thickness 6 : d=6

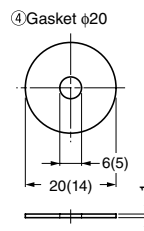
① Base plate φ16



② Base plate φ25



③ Gasket φ14



④ Gasket φ20

⑤ Screw M4x16

