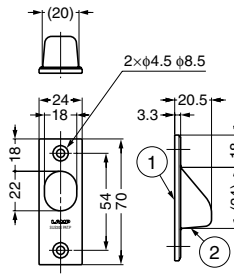


STAINLESS STEEL RECESSED PULL



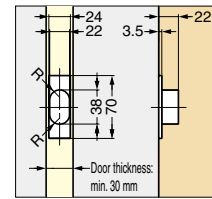
YK-70



Parts Included

Countersunk head tapping screw 4x20 (SUS)

Cut Out Dimensions



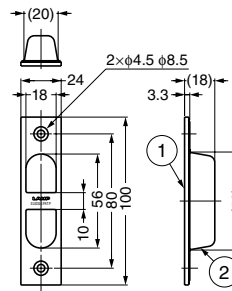
| No. | Part Name | Material | Finish |
|-----|-----------|--------------------------|--------|
| ① | Body | Stainless Steel (SUS304) | Satin |
| ② | Case | Stainless Steel (SUS304) | Plain |

| Item Code | Item Name | Weight | Box | Carton |
|-------------|-----------|--------|--------|---------|
| 100-010-390 | YK-70 | 37 g | 20 pcs | 200 pcs |

STAINLESS STEEL RECESSED PULL



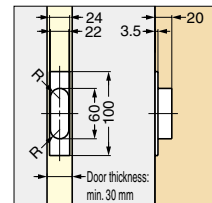
YK-W100



Parts Included

Countersunk head tapping screw 4x20 (SUS)

Cut Out Dimensions



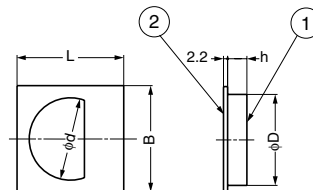
| No. | Part Name | Material | Finish |
|-----|-----------|--------------------------|--------|
| ① | Body | Stainless Steel (SUS304) | Satin |
| ② | Case | Stainless Steel (SUS304) | Plain |

| Item Code | Item Name | Weight | Box | Carton |
|-------------|-----------|--------|--------|---------|
| 100-010-391 | YK-W100 | 45 g | 20 pcs | 160 pcs |

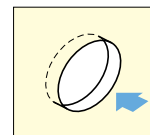
STAINLESS STEEL RECESSED PULL



SKH



Installation



| No. | Material | Finish/Colour |
|-----|--------------------------|---------------|
| ① | High Impact Polystyrene | Black |
| ② | Stainless Steel (SUS304) | Satin |

| Item Code | Item Name | L | B | h | D | d | Weight | Box | Carton |
|-------------|-----------|----|----|------|------|----|--------|---------|-----------|
| 100-010-179 | SKH-44 | 44 | 44 | 9.8 | 35.1 | 31 | 10 g | 100 pcs | 1,000 pcs |
| 100-010-177 | SKH-47 | 47 | 47 | 10.3 | 37.6 | 34 | 11 g | 60 pcs | 1,440 pcs |
| 100-010-178 | SKH-57 | 57 | 57 | 10.3 | 48.6 | 44 | 16 g | 50 pcs | 1,200 pcs |