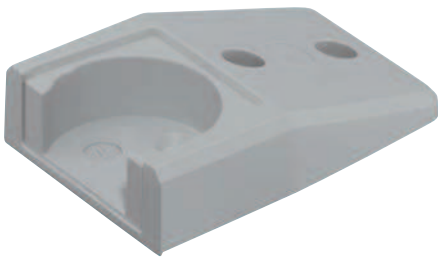


Adapter for push button sender, surface mounted



- > For screw fixing to the side panel as support for push button sender
- > Light grey RAL 7035 plastic
- > Order qty: 1 set



Cat. No.	
Adapter for push button sender	372.37.090

Button cell battery CR 2032



- > Replacement battery for push button sender
- > Order qty: 1 pc

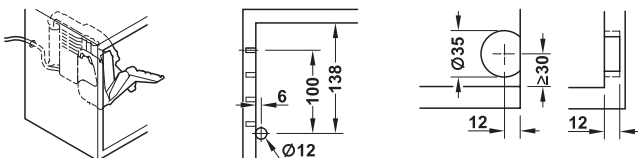
Cat. No.	
CR 2032 button cell battery	002.99.032

Replacement push button sender



- > For Free e-drive
- > Radio frequency: 2.4 GHz
- > Replaceable CR 2032 button cell lithium battery included
- > Order qty: 1 pc

Push button sender and cable guide installation



Cat. No.	
Push button sender	372.91.097

