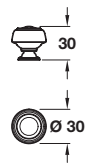


KANE knob



Product is subject to variations in finish due to the finishing and manufacturing process of certain materials

- > 1x 8/32 x 1" (non-metric) screw included
- > Zinc alloy
- > Order qty: 1 pc

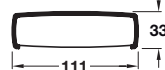
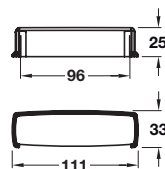
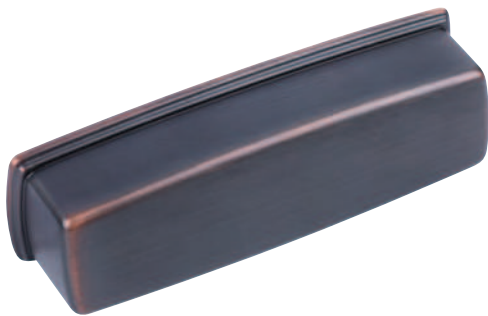


Finish	Cat. No.
Oil rubbed bronze	133.50.609



All handles on this page include 8/32 x 1" (non-metric) screws. If you require a different length order non-metric cut off screw Cat. No. 022.24.881 shown on page **4.253**

KANE cup handle



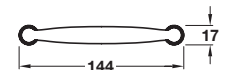
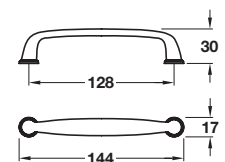
Product is subject to variations in finish due to the finishing and manufacturing process of certain materials

- > 2x 8/32 x 1" (non-metric) screws included
- > Zinc alloy
- > Order qty: 1 pc



Finish	Cat. No.
Oil rubbed bronze	133.50.140

KANE pull handle



Product is subject to variations in finish due to the finishing and manufacturing process of certain materials

- > 2x 8/32 x 1" (non-metric) screws included
- > Zinc alloy
- > Order qty: 1 pc



Finish	Cat. No.
Oil rubbed bronze	133.50.340