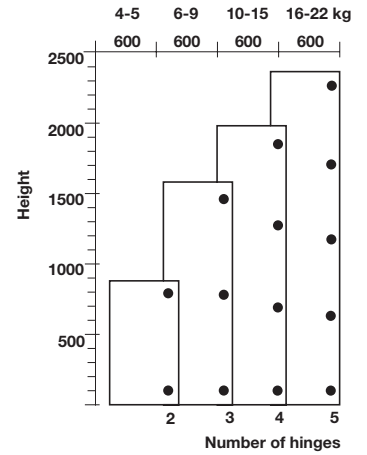
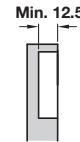
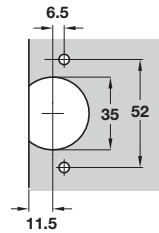


# HÄFELE 270° HINGE AND MOUNTING PLATES



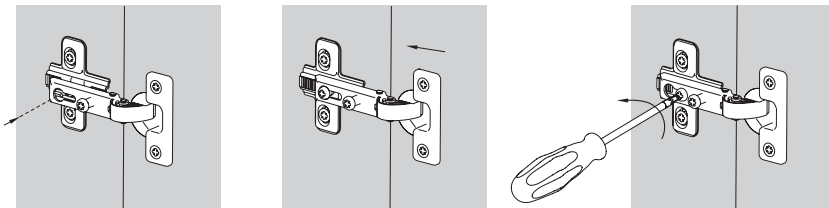
- > Opening angle 270°, Ø 35 mm cup
- > Screw fixing cup
- > For door thicknesses up to 22 mm
- > Full overlay mounting zinc cup and hinge arm
- > Order fixing screws separately
- > Order qty: 1 pc



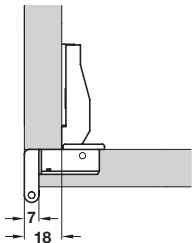
**Key-hole system**

- Refrigerator hinge
- Special hinges

The hinge is assembled on the mounting plate inserting the fixing screw on the appropriate hole on the hinge arm. After adjusting the door depth, the mounting procedure is finished by tightening the fixing screw.



**Full overlay mounting**



Side panel thickness mm							
18	19	20	21	22	23	24	
0	1	2	3	4	5	6	0
Side panel overlay mm				Mounting plate height mm			



Fixing	Keyhole fixing
Screw fixing	312.50.600

**YOU ALSO NEED:**

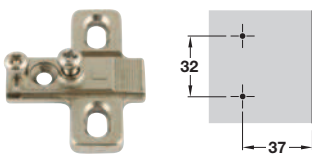
**MOUNTING PLATES**  
Shown below

**FIXING SCREWS**  
Section 13 page 88

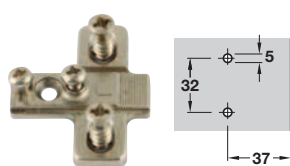
**OPTIONAL ACCESSORIES**  
Pages 109-121

**Keyhole fixing mounting plate for 270° hinge only**

For Hospa screws



With pre-mounted Euro screws



- > Hospa screw fixing or with pre-mounted Euro screws
- > Nickel-plated zinc
- > Order fixing screws separately for Hospa screw fixing version
- > Order qty: Multiples of 10 pcs



Height	Pre-mounted Euro screws	Hospa screws
0 mm	312.56.610	312.56.600

TCH TECHNOLOGY 2018, © Häfele U.K. Ltd 2018. Dimensional data not binding. We reserve the right to alter specifications without notice.