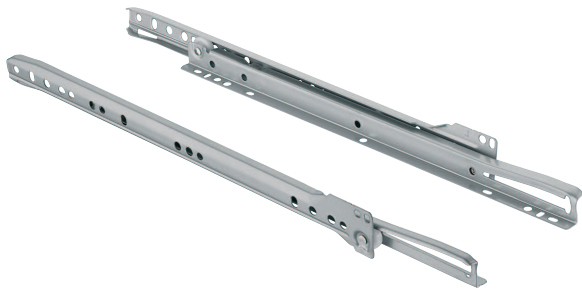


# ROLLER RUNNERS

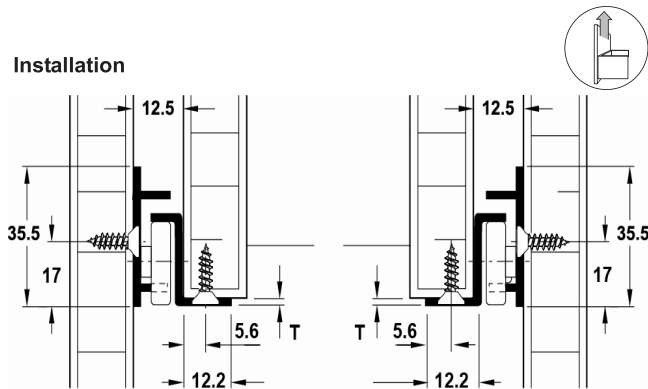
Self closing runners with polyamide rollers. Add on Smuso soft closing mechanism available.

## Drawer runners, single extension



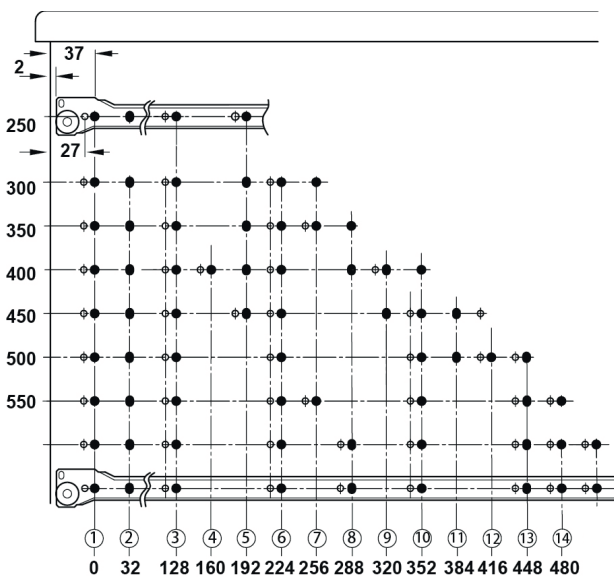
- > Carrying capacity dependant on length:
  - 20 kg - 250 / 300 / 350 / 400 / 450 mm lengths
  - 17 kg - 500 / 550 mm lengths
- > Side stability provided by automatic guidance on the right hand side
- > Screw fixing to drawer and screw fixing using slots in carcase profile, 32 mm series drilled holes
- > Self closing
- > Guided by 4 friction bearing mounted polyamide rollers
- > Height adjustment via slotted holes in cabinet rail
- > 1.0 mm steel thickness
- > Plastic coated steel
- > Order fixing screws separately
- > Order qty: Multiples of 1 pair

### Installation



Max. drawer width = internal cabinet width - 25 mm

### Drilling pattern



Installed length	Extension length	Capacity kg	Cat. No.
<b>White (RAL 9010)</b>			
250 mm	163 mm	20 kg	431.16.710
300 mm	213 mm	20 kg	431.16.711
350 mm	263 mm	20 kg	431.16.712
400 mm	310 mm	20 kg	431.16.713
450 mm	355 mm	20 kg	431.16.714
500 mm	393 mm	17 kg	431.16.715
550 mm	443 mm	17 kg	431.16.716
<b>Black (RAL 9011)</b>			
400 mm	310 mm	20 kg	431.16.313
450 mm	355 mm	20 kg	431.16.314
500 mm	393 mm	17 kg	431.16.315



Soft and self closing mechanism and spacer shown on page 257

PAGE AMENDED  
29.01.21/1