

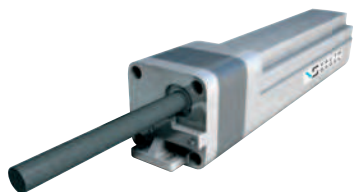
VAUTH-SAGEL POWER MOVE AND PAM

1

Optional accessories are available to enhance the functionality of the larder units. The Power move® and PAM are both add-ons to improve the movement of the larder unit.

- > For use with VS TAL larder units with synchronized runners
- > Used together, the Power move® electrical push-to-open and PAM mechanical pull-out-soft-stop mechanism are a very elegant complement to the VS TAL larder units
- > Can be retro-fitted

Power move® electric motor



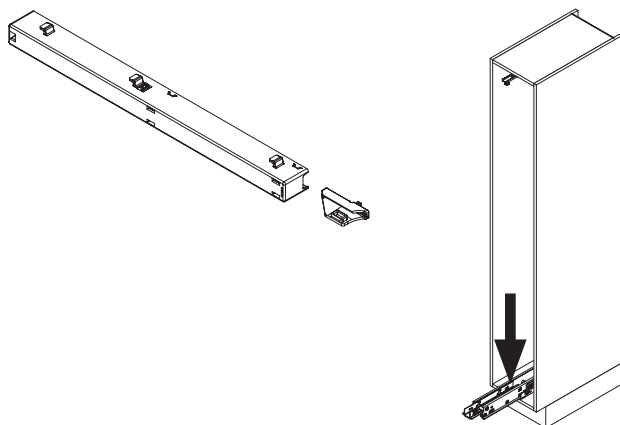
- > Power move® is an electrical push-to-open mechanism
- > Can be used in conjunction with the PAM mechanism
- > Can be retro-fitted
- > Fixings included
- > For use with VS TAL larder units with synchronized runners, shown on pages **26-29**
- > Drive control is dependant on load and will adjust itself automatically
- > By lightly pulling or pressing the cabinet front the electric motor is triggered to open the larder unit
- > Rubber minimises the amount of noise transmitted to the cabinet
- > Safety stop: Pull out movement is stopped if larder unit touches person or object in the way
- > If power fails, the larder unit can be used like a normal pull-out unit
- > Please note: the motor is mains powered, UK mains plug included, and will require access to a plug socket
- > Grey plastic
- > Order qty: 1 pc

VAUTH-SAGEL
10
YEAR
WARRANTY

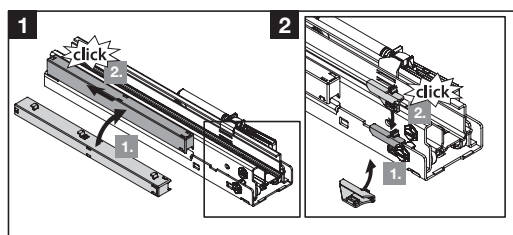
Fixings
included
✓

Item	Cat. No.
Power move®	547.21.090

VS PAM power assisted movement



- > PAM is a mechanical pull-out-soft-stop mechanism
- > Offers and ensures a quiet and gentle stop of the larder unit in the pull-out direction
- > Can be used in conjunction with the Power move® mechanism
- > Tool-free installation, simply clips into place
- > For use with VS TAL larder units with synchronized runners, shown on pages **26-29**
- > Grey plastic
- > Order qty: 1 pc



VAUTH-SAGEL
10
YEAR
WARRANTY

Fixings
included
✓

Item	Cat. No.
PAM	547.24.990