

# FRAME HANGER

TEST METHOD

LOAD CAPACITY  
10 kg  
22 lbs

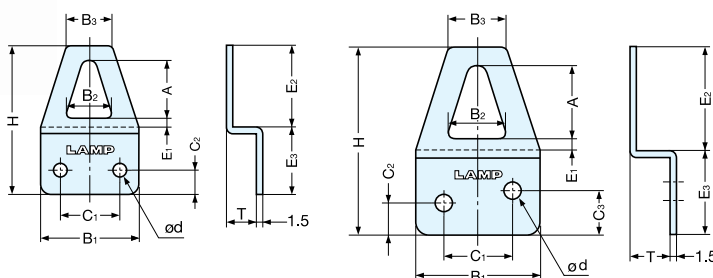
STAINLESS

STAINLESS 304 STEEL

AP

BRACKETS & HOOKS

FRAME HANGERS



Material	Finish
304 Stainless Steel	Polished

Item No.	B <sub>1</sub>	B <sub>2</sub>	B <sub>3</sub>	H	A	C <sub>1</sub>	C <sub>2</sub>	C <sub>3</sub>	d	E <sub>1</sub>	E <sub>2</sub>	E <sub>3</sub>	T	Load Capacity (kg)	Weight (g)	Box (pcs)	Carton (pcs)	Screw
AP-20	20 ( 25/32" )	9.2	9.2	30.4 ( 1- 3/16" )	11.8	12	5	-	2.8	2	16.8	13.6	6	10 (22 lbs)	6	100	1000	2.7×13
AP-25	25 ( 63/64" )	11.5	11.5	37.5 ( 1-15/32" )	14.7	14	6.5	9	3.3	2.5	20.5	17	8		10			3.1×16
AP-32	32 ( 1-17/64" )	14.8	14.8	47 ( 1-27/32" )	17.2	18	8	12	4.2	3.2	24.5	22.5	10		16			3.5×16

# FRAME HANGER

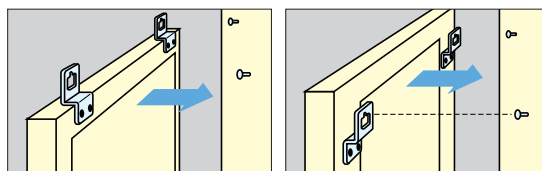
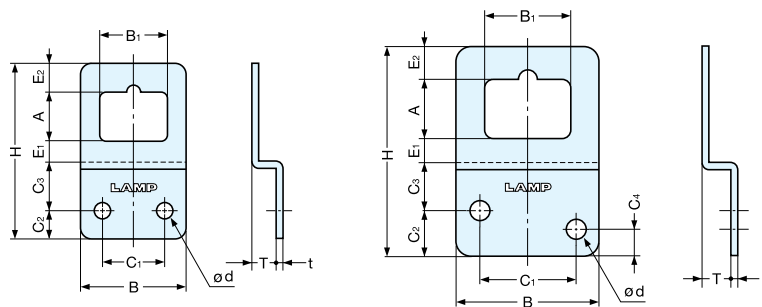
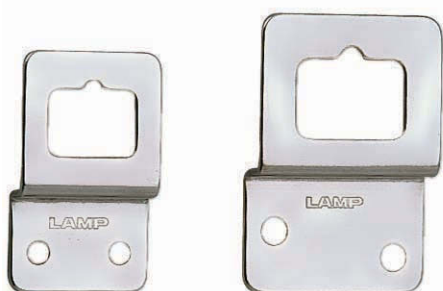
TEST METHOD

LOAD CAPACITY  
10 kg  
22 lbs

STAINLESS

STAINLESS 304 STEEL

SP



Material	Finish
304 Stainless Steel	Polished

Item No.	B	B <sub>2</sub>	H	A	C <sub>1</sub>	C <sub>2</sub>	C <sub>3</sub>	C <sub>4</sub>	d	E <sub>1</sub>	E <sub>2</sub>	T	t	Load Capacity (kg)	Weight (g)	Box (pcs)	Carton (pcs)	Screw
SP-17	17 ( 43/64" )	10.5	28.5 ( 1-1/8" )	7	8	4.5	( 9.5 )	-	2.7	3.5	4	4	1.2	10 (22 lbs)	4	200	1000	2.7×13
SP-22	22 ( 7/8" )	14	36.5 ( 1-7/16" )	10	13	6	( 10 )	-	3.3	4.5	6	5	1.5		8			3.1×16
SP-30	30 ( 1-3/16" )	18	43.5 ( 1-23/32" )	12	20	9.5	( 10 )	5.5	4.2	5	7	6			13			500