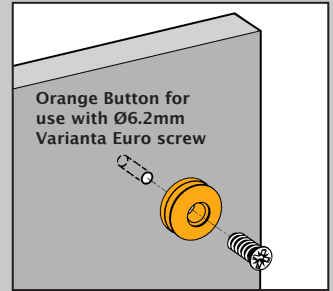
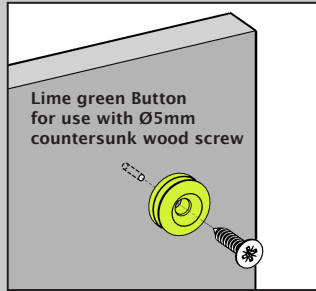


The button

Choose the Button to suit the screw type that works best with your panel material.

Use lime green Buttons with $\varnothing 5\text{mm}$ countersunk wood screws. Use orange Buttons with $\varnothing 6.2\text{mm}$ Euro screws (to fit $\varnothing 5\text{mm}$ pilot holes).



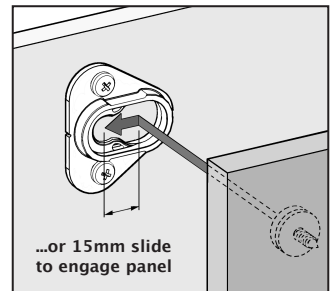
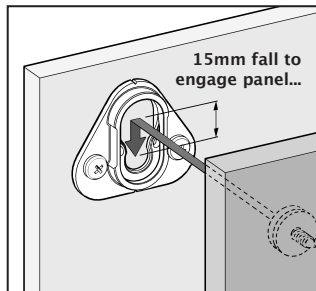
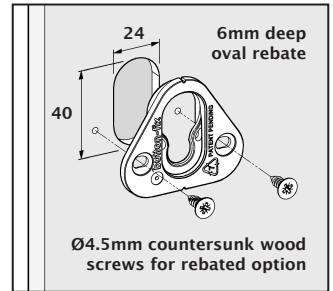
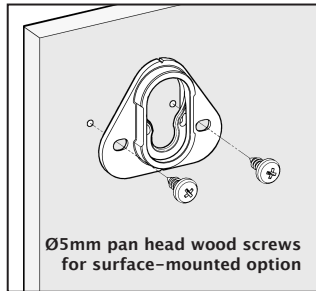
Type 1 fix

The Type 1 Fix connects parallel panels and is ideal for applications where strength and security are paramount.

Engage the Buttons in the Fixes and slide the panel down by 15mm until Button-fix goes 'click'. The Type 1 Fix can also be configured for sideways assembly.

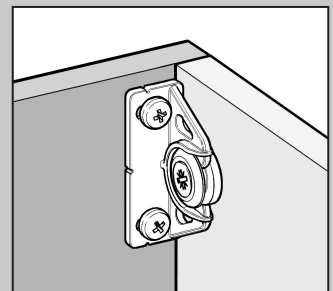
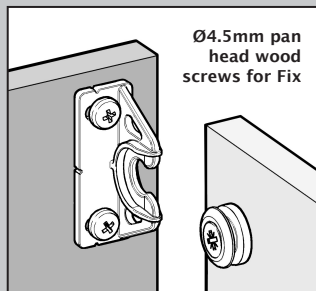
When surface-mounted, the Type 1 Fix creates an 8mm gap between the two attaching panels.

Alternatively, you can rebate the Type 1 Fix, to reduce the gap between the two attaching panels to only 3mm.



Type 2 fix

The Type 2 Fix connects panels at 90° with a simple push/pull fit. It is ideal for applications where the emphasis is more on ease of fit and less on strength. Unlike Type 1, the Type 2 Fix does not require a 15mm drop-down engagement.



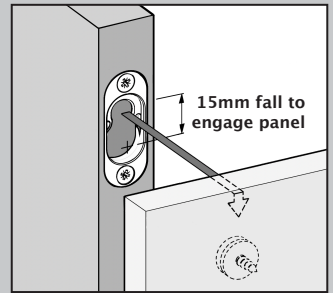
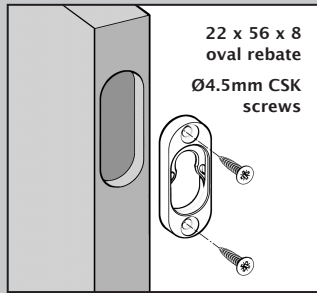
www.button-fix.com

Visit our website for full instructions, safety notes and load test reports. For critical applications it is essential to perform your own load tests with your materials and fixings.

Type 1 flush fix

The Type 1 Flush Fix is for applications where panel-panel contact is required and fits a simple oval rebate.

It can be rebated into the edge of a panel of at least 28mm thick (as shown) or the face of a panel of at least 18mm thick.

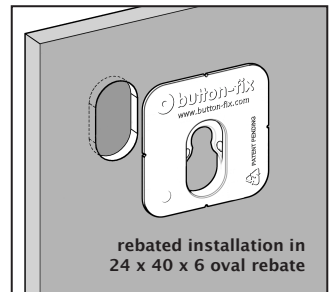
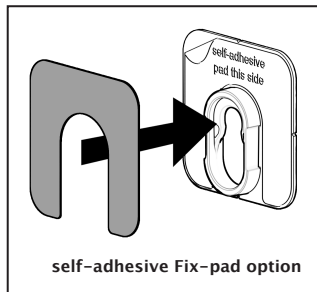
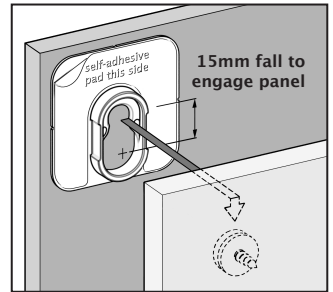


Type 1 bonded fix

The Type 1 Bonded Fix is for applications where screw-fixing to the panel is not possible and bonding is the preferred option. As well as surface-mounting, the Fix may be rebated for additional strength and ease of alignment.

The Fix is manufactured in ABS plastic and there are many structural adhesives suitable for bonding it to a wide range of panel materials.

A self-adhesive Fix-pad may be ordered separately. We recommend using these in a rebated configuration, to avoid possible creep under loading.



Marker accessories

Button and Fix markers may be ordered separately to quickly and accurately align the Button-fix installation. The markers will leave indents in the mating panel surface, which can be used as guides. Visit our website to see the full range of accessories.

