

DRAW LATCH (W/SAFETY LOCK)

TEST
METHOD

NO SCREW

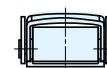
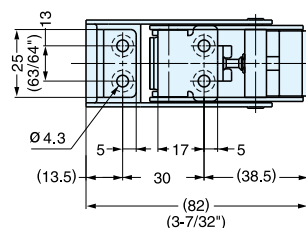
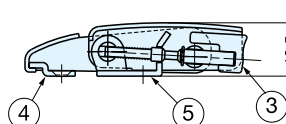
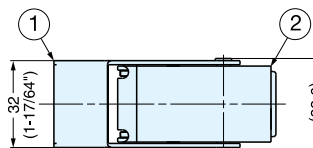
STAINLESS
304
STEEL

STF-82L

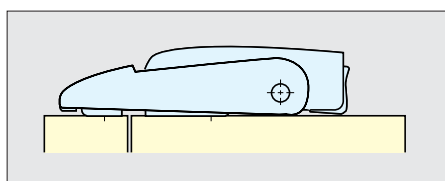
- With safety lock to prevent accidental release.
- Push safety button and lift to release.



PAT.P



Countersunk Hole



Installation

Recommended Screw : M4

Item No.	Load Capacity (kg)	Weight (g)	Box (pcs)	Carton (pcs)
STF-82L	80 (176 lbs)	111	12	180

No.	Part Name	Material	Finish
①	Body A	304 Stainless Steel	Satin
②	Body B		
③	Button	Synthetic Rubber	Black
④	Counterplate	304 Stainless Steel	Satin
⑤	Mounting Plate		Polished

DRAW LATCH (W/SAFETY LOCK)

TEST
METHOD

NO SCREW

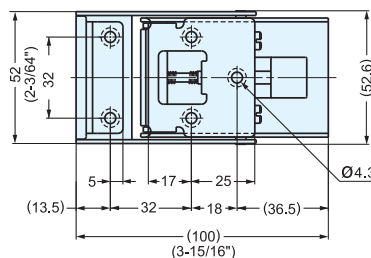
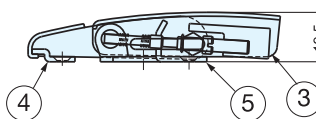
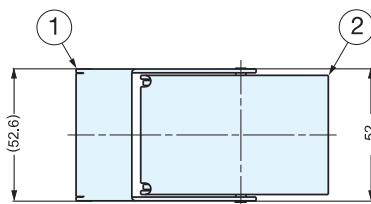
STAINLESS
304
STEEL

STF-100

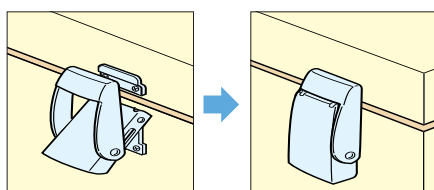
- With safety lock to prevent accidental release.
- Push safety button and lift to release.



PAT.P



Countersunk Hole



Installation

Recommended Screw : M4

Item No.	Load Capacity (kg)	Weight (g)	Box (pcs)	Carton (pcs)
STF-100	80 (176 lbs)	190	6	120

No.	Part Name	Material	Finish
①	Body A	304 Stainless Steel	Satin
②	Body B		
③	Button	Synthetic Rubber	Black
④	Counterplate	304 Stainless Steel	Satin
⑤	Mounting Plate		Polished