

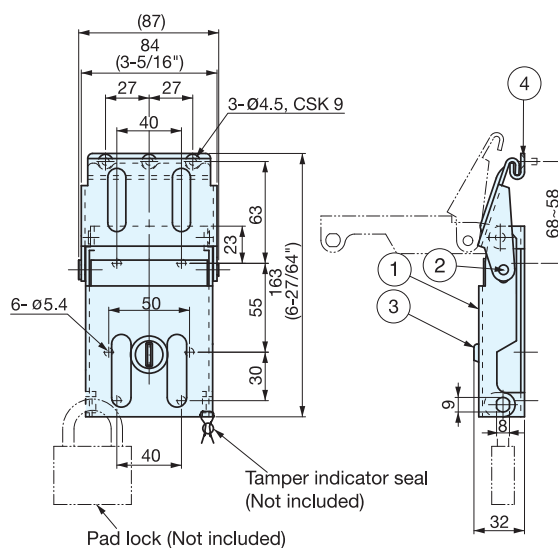
## DRAW LATCH



THF-75



- Safety lever prevents accidental release.
- Push the safety lever and lift latch to open.
- Includes a function to allow use for pad lock or tamper indicator seals. (Pad lock and wire not included.)



| No. | Part Name    | Material            | Finish               |
|-----|--------------|---------------------|----------------------|
| ①   | Body         | Steel               | Yellow Zinc Chromate |
| ②   | Pin          | 304 Stainless Steel | Plain                |
| ③   | Safety Lever |                     |                      |
| ④   | Counterplate | Steel               | Yellow Zinc Chromate |

| Item No. | Load Capacity (kg) | Weight (g) | Box (pcs) | Carton (pcs) |
|----------|--------------------|------------|-----------|--------------|
| THF-75   | 75 (165 lbs)       | 657        | 10        | 100          |

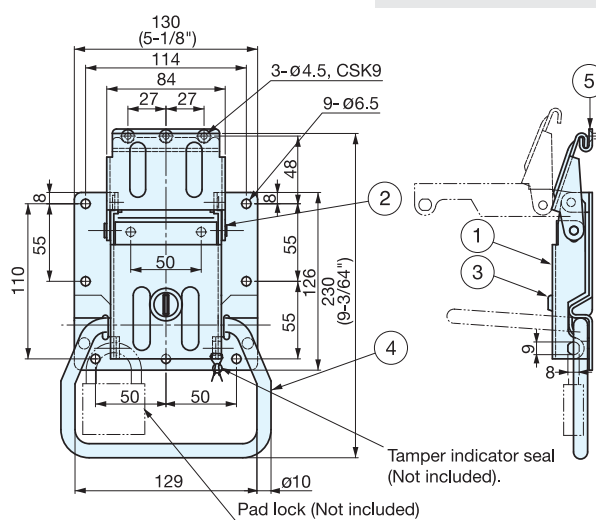
## DRAW LATCH (W/HANDLE)



THF-100



- With handle and safety lever.
- Push safety lever and lift latch to open.
- Spring loaded to hold handle in retracted position.
- Includes a function to allow use for pad lock or tamper indicator seals. (Pad lock and wire not included.)



| No. | Part Name    | Material            | Finish               |
|-----|--------------|---------------------|----------------------|
| ①   | Body         | Steel               | Yellow Zinc Chromate |
| ②   | Pin          | 304 Stainless Steel | Plain                |
| ③   | Safety Lever |                     |                      |
| ④   | Handle       | Steel               | Yellow Zinc Chromate |
| ⑤   | Counterplate |                     |                      |

| Item No. | Load Capacity (kg) | Weight (g) | Box (pcs) | Carton (pcs) |
|----------|--------------------|------------|-----------|--------------|
| THF-100  | 100 (220 lbs)      | 1064       | 20        | 200          |