



## Zwei L PUSH KNOB LATCH

TEST  
METHOD 11

L=R

STAINLESS  
316  
STEEL

STAINLESS

ZL-2901



Knob (Pushed in)



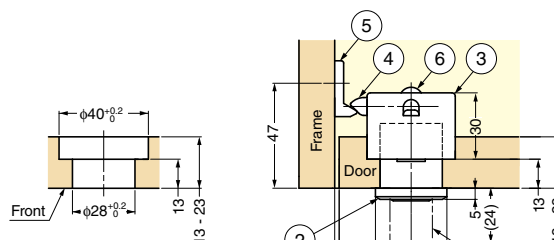
### Features

- Made of highly corrosion resistant SUS316
- Ultrapremium Zwei L finish. Zwei L finish: Using top class polishing technology, these products combine the elegance of Satin with the deep glow of a Mirror.
- When the knob is pushed in, the product becomes flush with its surroundings for a safe and smart design.
- Pushing the knob while the door is closed will lock it. Pushing the knob again will unlock it.
- Available for both overlay and inset doors.
- This product is sold as a set and comes with both a latch and a push knob

### Parts Included

Round head wood screw 3.1×10, 3.1×28 (SUS)

### Cut Out Dimensions



| No. | Part Name                      | Material                 | Finish/Colour |
|-----|--------------------------------|--------------------------|---------------|
| ①   | Push Knob                      | Stainless Steel (SUS316) | Zwei L Finish |
| ②   | Latch Body                     | Stainless Steel (SUS316) | Zwei L Finish |
| ③   | Latch Body                     | ABS                      | Black         |
| ④   | Latch                          | Polyacetal (POM)         | Black         |
| ⑤   | Counter Plate                  | ABS                      | Black         |
| ⑥   | Truss Head Tapping Screw M3×25 | Stainless Steel          | -             |

| Item Code   | Item Name | Retaining Force N | Retaining Force kgf | Weight | Box  |
|-------------|-----------|-------------------|---------------------|--------|------|
| 140-050-403 | ZL-2901   | 98 N              | 10 kgf              | 100 g  | 1 pc |