



## Drilling template for hinges



Symbolic image

- Template for drilling the side fixing positions for hinges (Ø 8 and/or Ø 2.5 mm)
- Template for pre-drilling the fixing positions for the horizontal and cruciform mounting plates
- Template for pre-drilling the fixing positions for adapter plates (BLUMOTION/TIP-ON for doors)
- Assembly on a marking line
- Material: nylon/steel

### Assembly possibilities

**AVENTOS HF**  
**AVENTOS HK-XS**  
**CLIP top BLUMOTION**  
**CLIP top**  
**MODUL**

### Page instructions

Overview – templates	734
Overview – assembly possibilities	736



Application video

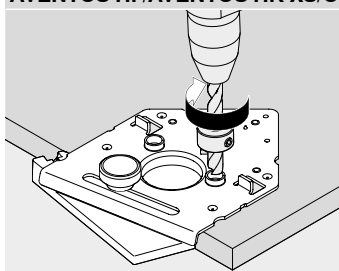
### Order information

Description	Part no.
Drilling template for hinges (Ø 8/Ø 2.5 mm)	65.059A
<b>Composed of:</b>	
- 1 x Drilling template for hinges	
- 1 x Reducing bush Ø 8 to Ø 2.5 mm	
- 1 x Drilling depth stop Ø 8 mm	

Description	Part no.
Drilling template for hinges (Ø 2.5 mm)	65.055A
<b>Composed of:</b>	
- 1 x Drilling template for hinges	

### Assembly possibilities

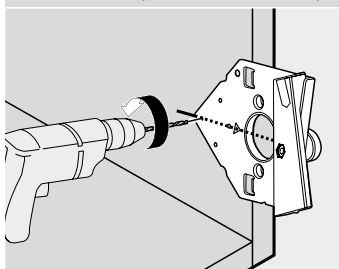
#### AVENTOS HF/AVENTOS HK-XS/CLIP top BLUMOTION/CLIP top/MODUL



#### Hinge system assembly – Door

- Perform boss drilling (Ø 35 mm) e.g. using a pillar drill
- Position template and fix with a spacer
- Drill side holes for hinges

#### AVENTOS HF/AVENTOS HK-XS/CLIP top BLUMOTION/CLIP top/MODUL



#### Hinge system assembly – Cabinet

- Mark hinge arm centre
- Attach template and pre-drill fixing positions for inline (20 mm) or cruciform mounting plates (37 mm)