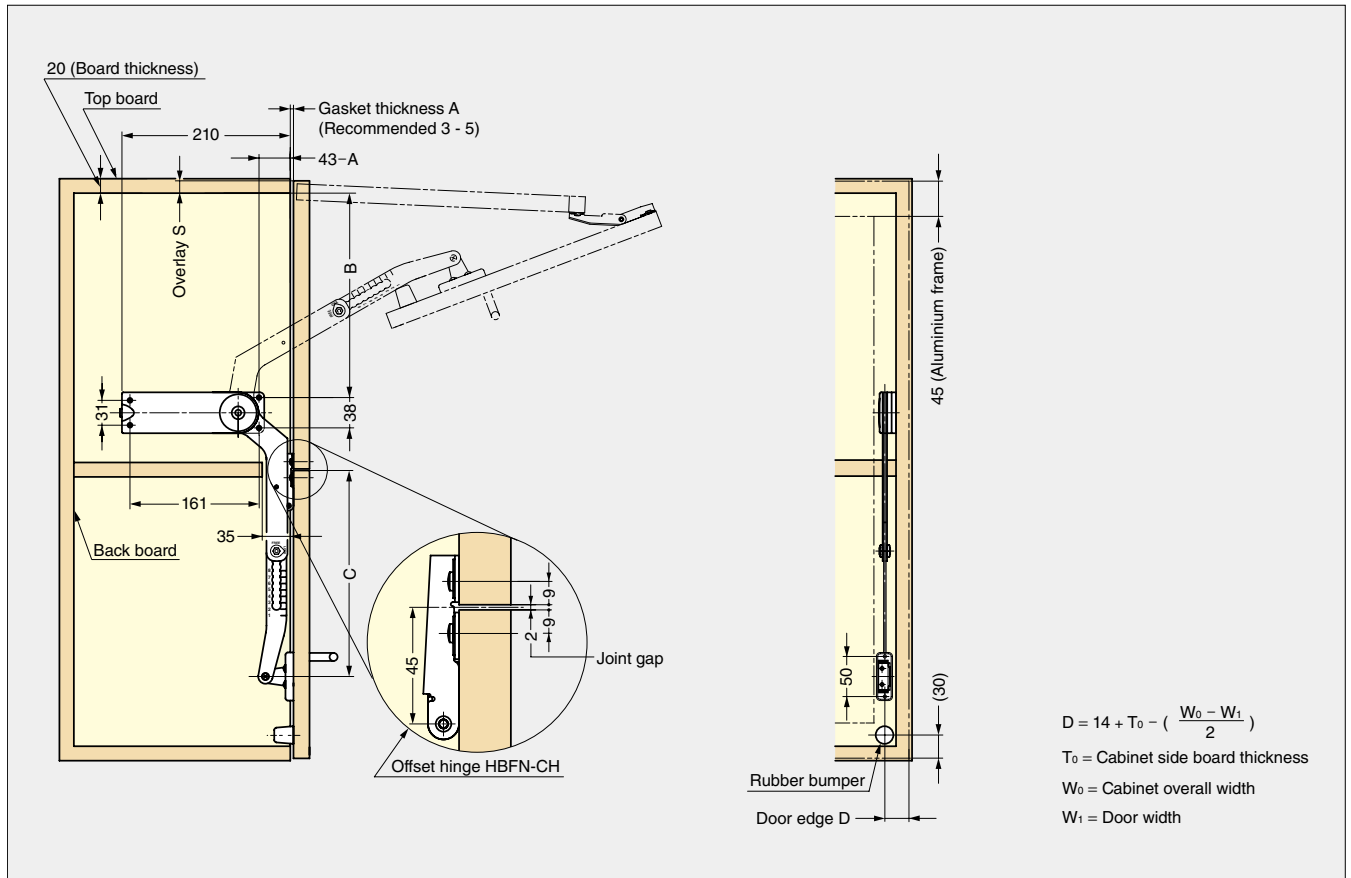


Installation



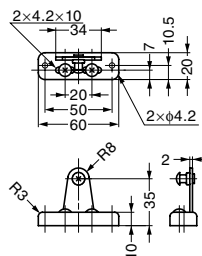
LID SUPPORTS

HORIZONTAL BI-FOLDING UNIT

Installation Dimensions

| Door Height | Upper Door Opening Angle 90° | | | Upper Door Opening Angle 105° | | |
|-------------|------------------------------|-------|-----|-------------------------------|-------|-----|
| | Arm Adjustment Position | B | C | Arm Adjustment Position | B | C |
| 320 | 1 | 247-S | 241 | 4 | 226-S | 244 |
| 330 | 2 | 252-S | 244 | 5 | 234-S | 250 |
| 340 | 3 | 258-S | 248 | 6 | 243-S | 257 |
| 350 | 4 | 263-S | 251 | 7 | 251-S | 263 |
| 360 | 5 | 269-S | 255 | 8 | 259-S | 269 |
| 370 | 6 | 274-S | 258 | 9 | 267-S | 275 |

ARM MOUNTING PLATE FOR HBFN



Features

Sold in pairs.

| Item Code | Item Name | Application | Material | Finish | Weight | Box |
|-------------|-----------|---|--------------|--------|--------|-----------|
| 180-109-618 | HBFN-SZ | For Wood Door/Aluminium Frame more than 45 mm | Steel/Rubber | Nickel | 44 g | 100 pairs |